



Power



Packaged

GASOLINE PRODUCTS  
CATALOG

**FUZHOU LONVI MACHINE CO.,LTD**  
Add:Hongkuan Industrial Park, Fuqing City, Fujian Province,China  
Tel:86-591-85193327 Fax:86-591-85192357





# LONVI PROFILE

## GASOLINE ENGINE AND GENERATOR MANUFACTURER



**Fuzhou Lonvi Machine Co., Ltd** is located in Hongkuan electromechanical park in Rongqiao economic and technical development zone in Fuqing City, Fujian Province, China. LONVI has been on the market since 2014s, mainly aimed at the power product and garden machine: gasoline air-cooled engine, portable generator, pump set, lawnmower, tiller and etc.



### 4 Subsidiaries of LEGA POWER GROUP:

- LAUNTOP** Fuzhou Launtop M&E Co., Ltd  
Air-cooled engine, Portable generator, Pump set
- LEEGA** Fujian Everstrong Leega Power Equipments Co., Ltd  
10-3300Kva diesel generator set, Light tower
- Lonvi** Fuzhou Lonvi Machine Co.,Ltd  
Gasoline product, Lawnmower, Tiller
- GENKINS** Chongqing Genkins Power Ltd  
High Quality Gasoline product

### 2 Factories of LEGA POWER GROUP

**Fuzhou Factory: LEGA, LAUNTOP, and LONVI**  
Add: Hongkuan Industry Park, Yangxia Town, Fuqing City, Fuzhou, Fujian, China

**Chongqing Factory: GENKINS**  
Add: No.6, East Loop Road, Gangcheng Industrial Zone, Jiangbei District, Chongqing, China

**19**  
Years experience for the power products(from 2000)

**1450**  
Employees for two factories in China(more than 25% of which are technician and engineers)

**230000**  
Square Meters factories. ISO9001 and ISO14000 standard

**400000**  
Units of generators each year

**120**  
Countries of market area





# LONVI GASOLINE ENGINE

**Max Output : 7.0hp-16.0hp**



**6** The effective intake and combustion of overhead value.



**5** Low running temperature prolongs the generator life.



#### 4 Option shaft for different uses



**3** Advanced design combustion chamber provides exceptional fuel efficiency and consistent power.



**2** Easy and fast starting, smooth operation and low vibration.



**1** Stable transistor ignition system, powerful, stable, durable and reliable.



# GASOLINE ENGINE

## LV 210/420 Series



GASOLIN



## LIGHTWEIGHT



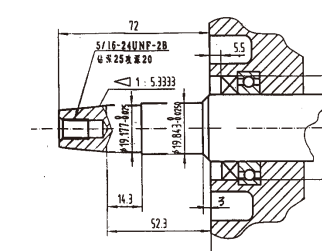
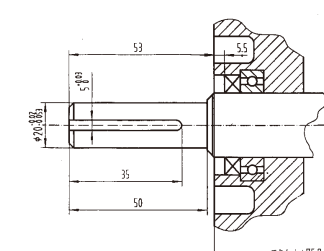
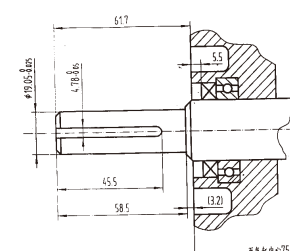
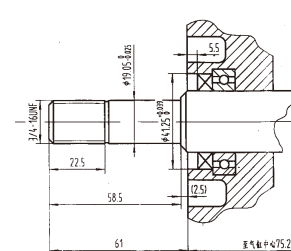
QUIET



## Technical Data

Model	LV210	LV420
BorexStroke (mm)	70x54	90x66
Displacement (cc)	208	420
Engine Speed (rpm)	3000/3600	3000/3600
Rated Output (hp)	5.0/5.5	9.8/11.0
Max Output (hp)	7.0	16.0
Compression Ratio	8.5:1	8.5:1
Fuel Tank Capacity (L)	3.6	6
Engine Oil Capacity (L)	0.6	1.4
Packing details		
Dimension LXWXH (mm)	400x335x350	540×480×505
Gross Weight (kg)	16	32
20FT Container Fit (pcs)	693	192
40HQ Container Fit (pcs)	1420	480

## Option Shifts





# GASOLINE GENERATOR

Max. AC Output : 0.8Kw-1.1Kw



GASOLINE



LIGHTWEIGHT



QUIET



- 1 Small size, light weight, low noise, reliable to use, easy to operate and repair.



- 2 Different model, voltage and frequency for option



- 3 950 series are suitable movable power source for the film, electrical engineering, audio-visual education programme, medical treatment, field-work and lighting, etc.



## Technical Data

Model	LV950	LV1200CL
Voltage (V)	110-120, 220-240	110-120, 220-240
Frequency (Hz)	50/60	50/60
Rated AC Output (Kw)	0.65/0.72	0.9/1.0
Max. AC Output (Kw)	0.72/0.8	1.0/1.1
Power Factor cos φ	1	1
DC output (V/A)	12/8.3	12/8.3
Fuel tank capacity (L)	4.2	5
Continuous operating hour (H)	5	4.3
Engine		
Engine model	1E45	LV156
Starting system	Recoil	Recoil
Displacement (cc)	63	93.5
Engine speed (rpm)	3000/3600	3000/3600
Packing details		
Dimension LXWXH (mm)	385×330×330	480×390×405
Gross Weight (kg)	17	26
20FT Container Fit (pcs)	735	360
40HQ Container Fit (pcs)	1380	870

# GASOLINE GENERATOR

Generator Series



GASOLINE



LIGHTWEIGHT



QUIET



## Technical Data

Model	LV2000CL(E)	LV2500CL(E)	LV3000CL(E)	LV3500CL(E)	LV6500CL(E)	LV7500CL(E)
Voltage (V)	110-120, 220-240	110-120, 220-240	110-120, 220-240	110-120, 220-240	110-120, 220-240	110-120, 220-240
Frequency (Hz)	50/60	50/60	50/60	50/60	50/60	50/60
Rated AC Output (Kw)	1.8/2.0	2.0/2.3	2.3/2.5	2.5/2.8	5.0/5.5	6.0/6.5
Max. AC Output (Kw)	2.0/2.3	2.3/2.5	2.5/2.8	2.8/3.0	5.5/6.0	6.5/7.0
Power Factor cos φ	1	1	1	1	1	1
DC output (V/A)	12/8.3	12/8.3	12/8.3	12/8.3	12/8.3	12/8.3
Fuel tank capacity (L)	15	15	15	15	25	25
Continuous operating hour (H)	7.6	6.9	6.2	5.9	6.9	6.5
Engine						
Engine model	LV210	LV210	LV210	LV210	LV420	LV420
Starting system	Recoil/electric	Recoil/electric	Recoil/electric	Recoil/electric	Recoil/electric	Recoil/electric
Displacement (cc)	208	208	208	208	420	420
Engine speed (rpm)	3000/3600	3000/3600	3000/3600	3000/3600	3000/3600	3000/3600
Packing details						
Dimension LXWXH (mm)	605×450×440	605×450×440	605×450×440	605×450×440	710×535×580	710×535×580
Gross Weight (kg)	35/39	36/40	37/41	39/43	75/81	78/84
20FT Container Fit (pcs)	240	240	240	240	135	135
40HQ Container Fit (pcs)	585	585	585	585	268	268





# GASOLINE GENERATOR

Max. AC Output : 2.0Kw-6.5Kw



# GASOLINE GENERATOR

Feature & Option Configurations

## Generator Feature

- Stable transistor ignition system.
- Excellent bearing performance, low vibration of the aluminum connect rod.
- THD less than 3% by AVR.
- Option handles and wheels, easy to move and transport.
- Stronger frame can effectively prevent damage during shipping and improve the reliability of the generator.
- Newly design of the muffler to low the noise and reduce the exhaust.
- Newly design of the air-filter for easy maintenance.
- Compact and light-weight.



## H series

- The Basic and classic model.
- Option 5V USB output.

## F series

- The most popular series with our customers.
- Low oil alert protection.

## E series

- The most popular series with African customers.

## LTN series

- The most popular series in the middle east market.

## N series

- The most popular series in China.
- With compact, reasonable and beautiful panel.

## V series

- The most popular series in the world.
- Beautiful appearance, and the design is full of flexibility.

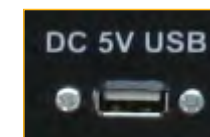
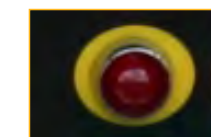
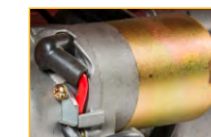
## Z series

- The most popular series in Europe.



## Option Configurations:

- Electric start with battery.
- Wheels & Handles.
- DC socket.
- USB.
- Digital panel 3 in 1.
- Round type voltmeter and ammeter.
- Low oil alarm.
- Various AC sockets, voltage, and frequency.





# GASOLINE WATER PUMP

Max. Capacity (m<sup>3</sup>/hr) : 30–50



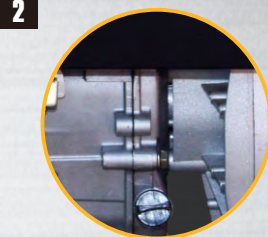
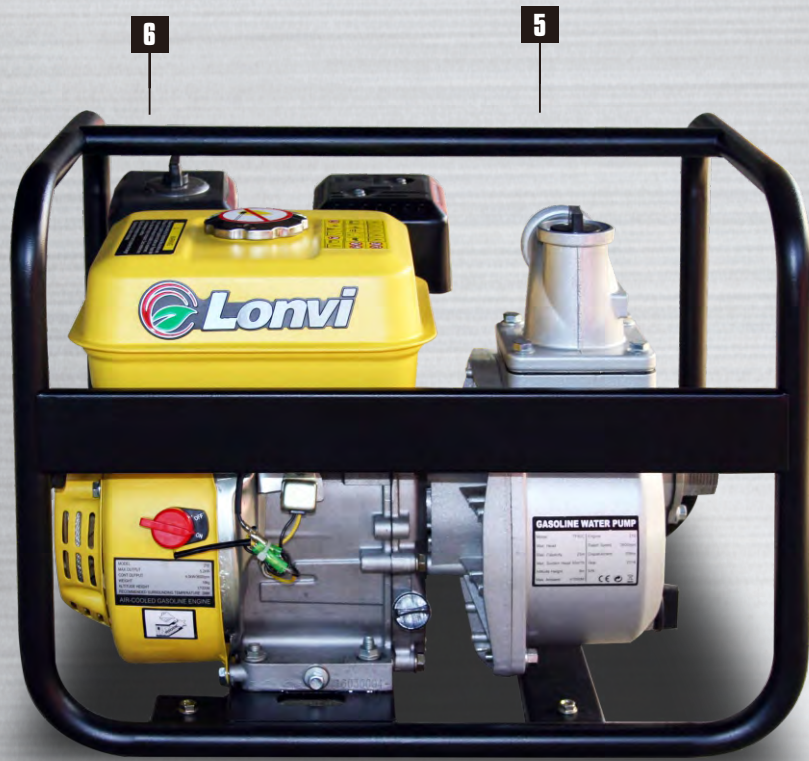
6 Powerful, stable, durable and reliable



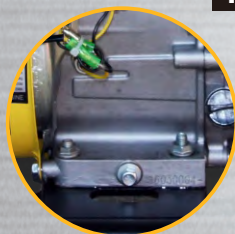
5 High quality ceramic mechanical sealing



4 Heavy duty frame, unique of the anti vibration and low running temperature prolongs the water pump life strong and light aluminum alloy pump body



2 Advanced design combustion chamber provides exceptional fuel efficiency and consistent power



1 Easy and fast starting, smooth operation and low vibration



3 Products widely used in the plains, hills, mountain crops, orchards irrigation, construction plant, water pumping for mines and municipal drainage

# GASOLINE WATER PUMP

Water Pump Series



## Technical Data

Model	LVP50AC	LVP80AC
Inlet (inch)	2	3
Outlet (inch)	2	3
Max. Capacity (m <sup>3</sup> /hr)	30	50
Max. Discharge head (m)	25	25
Self-priming time (S/4m)	70	120
Max. Suction head (m)	8	8
Engine model	LV210F	LV210F
Fuel Tank Capacity (L)	3.6	3.6
Packing details		
Dimension LXWXH (mm)	495X395X410	545X405X450
Gross Weight (kg)	23	26
20FT Container Fit (pcs)	325	300
40HQ Container Fit (pcs)	720	550

